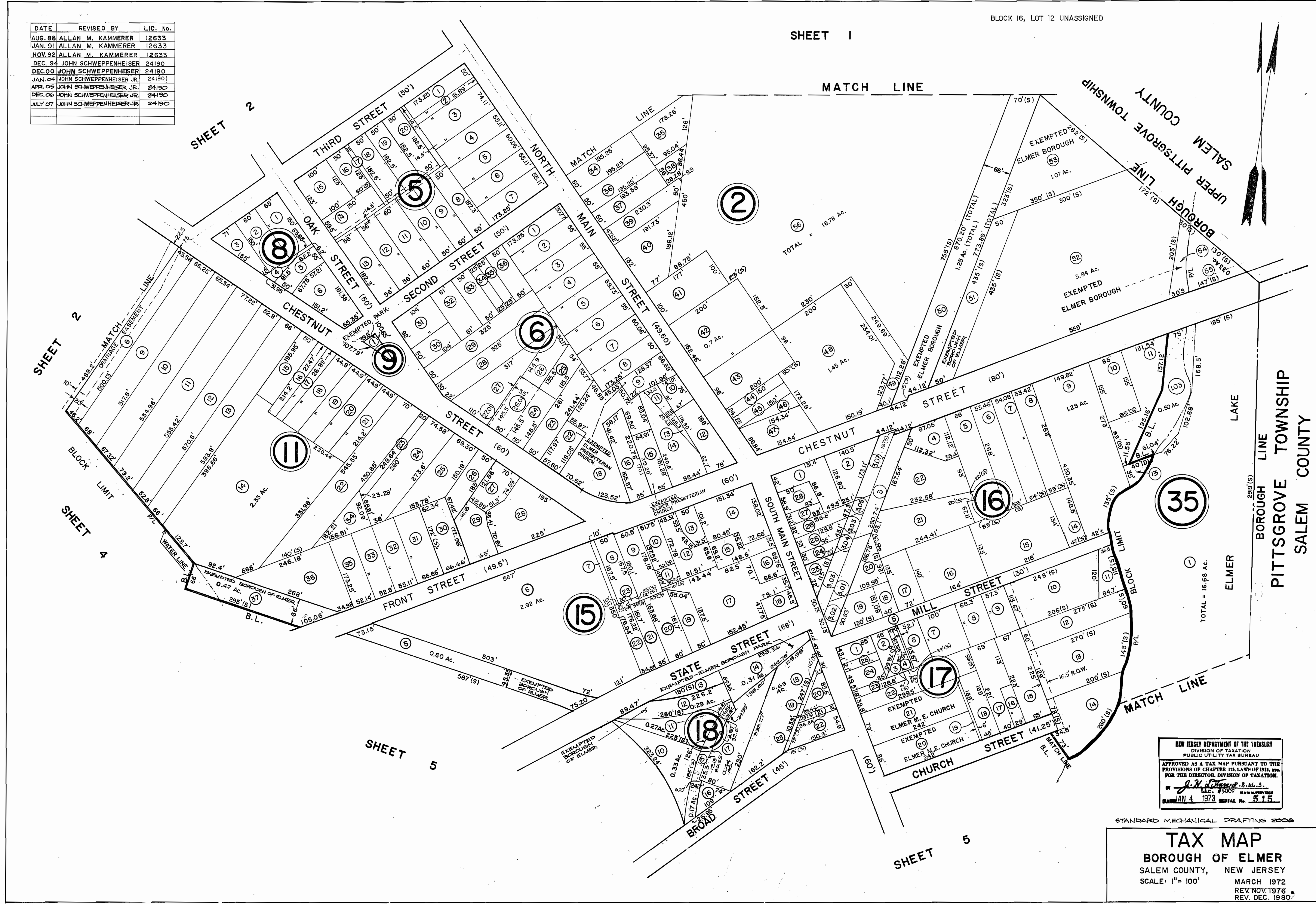
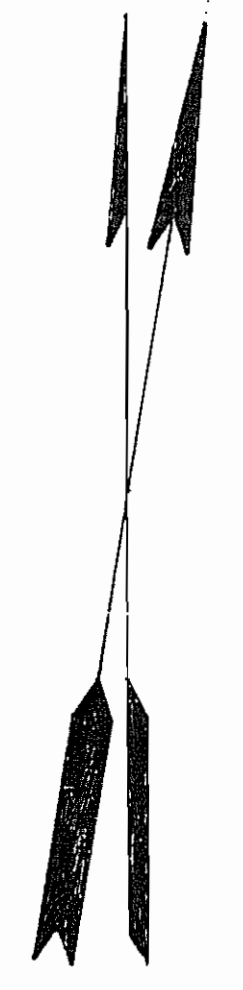


DATE	REVISED BY	L.I.C. No.
AUG. 88	ALLAN M. KAMMERER	12633
JAN. 91	ALLAN M. KAMMERER	12633
NOV. 92	ALLAN M. KAMMERER	12633
DEC. 94	JOHN SCHWEPPEHEISER	24190
DEC. 00	JOHN SCHWEPPEHEISER	24190
JAN. 04	JOHN SCHWEPPEHEISER JR.	24190
APR. 05	JOHN SCHWEPPEHEISER JR.	24190
DEC. 06	JOHN SCHWEPPEHEISER JR.	24190
JULY 07	JOHN SCHWEPPEHEISER JR.	24190



NEW JERSEY DEPARTMENT OF THE TREASURY
 DIVISION OF TAXATION
 PUBLIC UTILITY TAX BUREAU
 APPROVED AS A TAX MAP PURSUANT TO THE
 PROVISIONS OF CHAPTER 173, LAWN OF 1911,
 FOR THE DIRECTOR, DIVISION OF TAXATION.
[Signature]
 L.I.C. # 75009 STATE SUPERVISOR
 JAN 4 1973 SERIAL No. 515

STANDARD MECHANICAL DRAFTING 2006

TAX MAP
 BOROUGH OF ELMER
 SALEM COUNTY, NEW JERSEY
 SCALE: 1" = 100'
 MARCH 1972
 REV. NOV. 1976
 REV. DEC. 1990