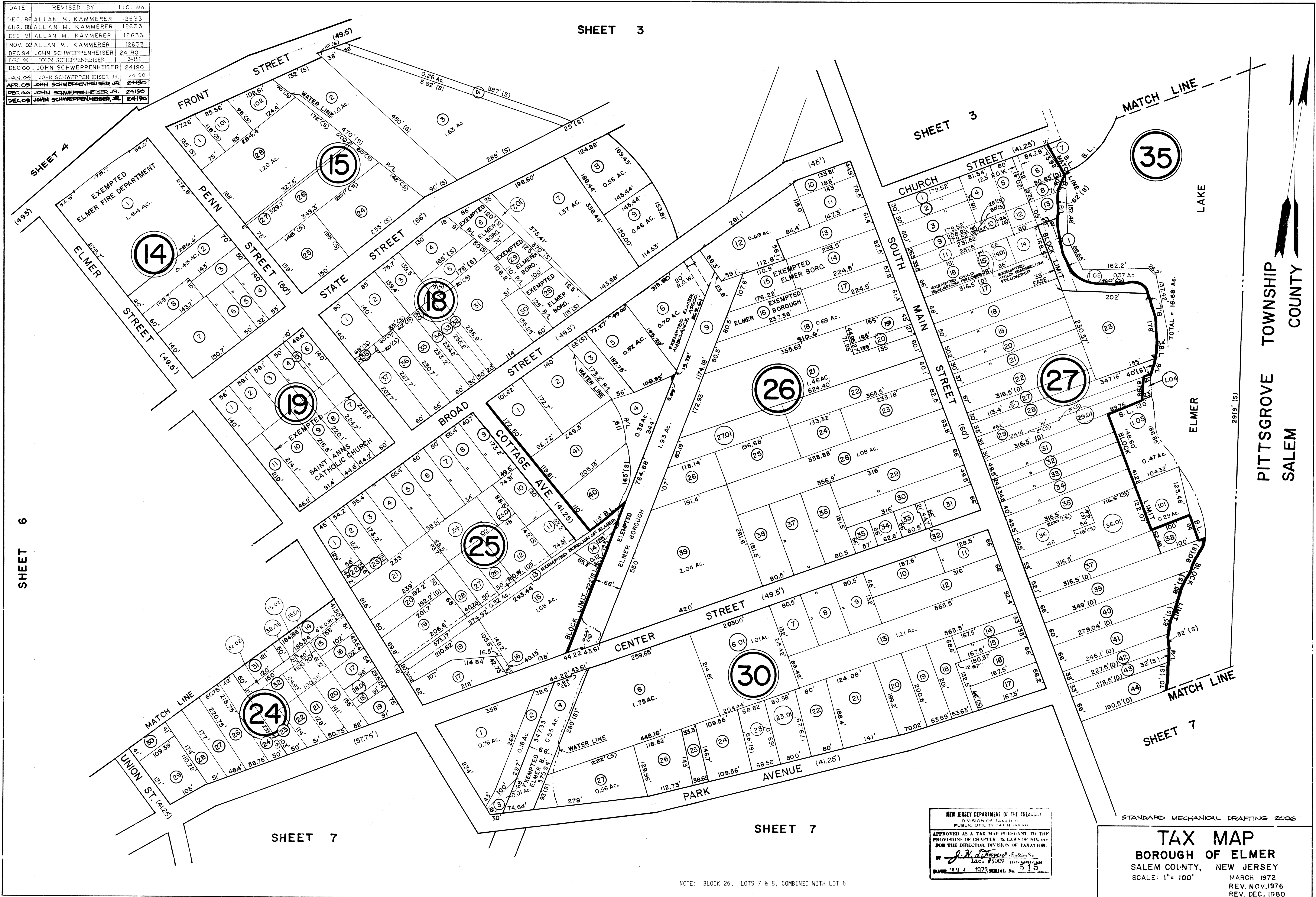


DATE	REVISED BY	LIC. No.
DEC. 86	ALLAN M. KAMMERER	12633
AUG. 88	ALLAN M. KAMMERER	12633
DEC. 91	ALLAN M. KAMMERER	12633
NOV. 92	ALLAN M. KAMMERER	12633
DEC. 94	JOHN SCHWEPPEHEISER	24190
DEC. 99	JOHN SCHWEPPEHEISER	24190
DEC. 00	JOHN SCHWEPPEHEISER	24190
JAN. 04	JOHN SCHWEPPEHEISER JR.	24190
APR. 05	JOHN SCHWEPPEHEISER JR.	24190
DEC. 06	JOHN SCHWEPPEHEISER JR.	24190
DEC. 09	JOHN SCHWEPPEHEISER, JR.	24190

SHEET 3



SHEET 6

SHEET 7

SHEET 7

SHEET 3

SHEET 7

PITTSBORO TOWNSHIP
SALEM COUNTY

NOTE: BLOCK 26, LOTS 7 & 8, COMBINED WITH LOT 6

NEW JERSEY DEPARTMENT OF THE TREASURY
DIVISION OF TAXATION
PUBLIC UTILITY TAX BUREAU

APPROVED AS A TAX MAP PURSUANT TO THE
PROVISIONS OF CHAPTER 125, LAWS OF 1914, ETC.
FOR THE DIRECTOR, DIVISION OF TAXATION.

J. A. [Signature]
LIC. #5009 STATE SUPERVISOR

DATE: JAN 4 1972 SERIAL No. 515

STANDARD MECHANICAL DRAFTING 2006

TAX MAP
BOROUGH OF ELMER
SALEM COUNTY, NEW JERSEY

SCALE: 1" = 100'

MARCH 1972
REV. NOV. 1976
REV. DEC. 1980