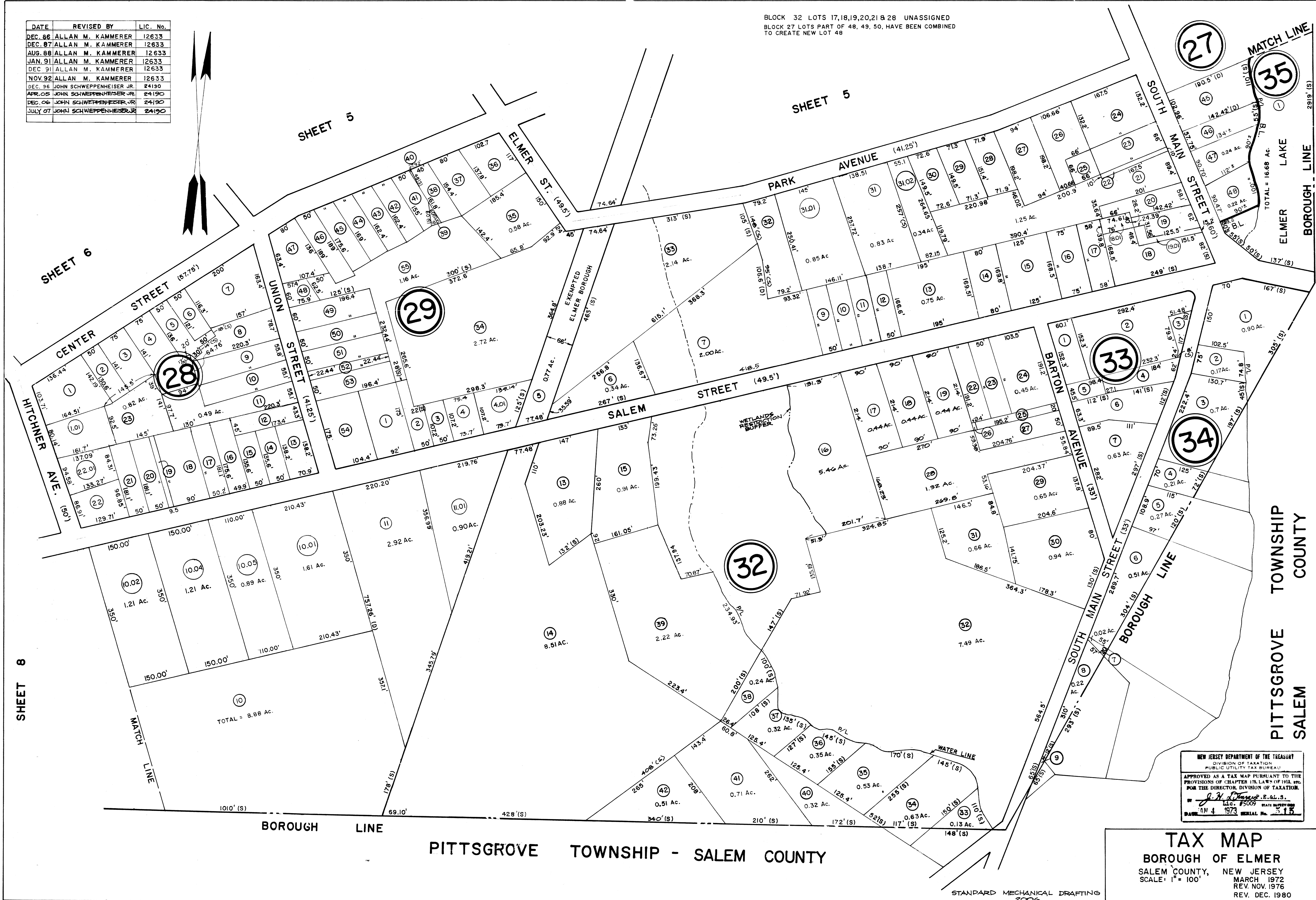


DATE	REVISED BY	LIC. No.
DEC. 86	ALLAN M. KAMMERER	12633
DEC. 87	ALLAN M. KAMMERER	12633
AUG. 88	ALLAN M. KAMMERER	12633
JAN. 91	ALLAN M. KAMMERER	12633
DEC. 91	ALLAN M. KAMMERER	12633
NOV. 92	ALLAN M. KAMMERER	12633
DEC. 96	JOHN SCHWEPPEHEISER JR.	24190
APR. 05	JOHN SCHWEPPEHEISER JR.	24190
DEC. 06	JOHN SCHWEPPEHEISER JR.	24190
JULY 07	JOHN SCHWEPPEHEISER JR.	24190

BLOCK 32 LOTS 17,18,19,20,21 & 28 UNASSIGNED
 BLOCK 27 LOTS PART OF 48, 49, 50, HAVE BEEN COMBINED
 TO CREATE NEW LOT 48



NEW JERSEY DEPARTMENT OF THE TREASURY
 DIVISION OF TAXATION
 PUBLIC UTILITY TAX BUREAU
 APPROVED AS A TAX MAP PURSUANT TO THE
 PROVISIONS OF CHAPTER 125, LAWS OF 1911, AND
 FOR THE DIRECTOR, DIVISION OF TAXATION.
J. H. [Signature], E.S.L.S.
 LIC. #5009 STATE REGISTERED
 DATE: JAN 4 1973 SERIAL No. 315

TAX MAP
 BOROUGH OF ELMER
 SALEM COUNTY, NEW JERSEY
 SCALE: 1" = 100'
 MARCH 1972
 REV. NOV. 1976
 REV. DEC. 1980

STANDARD MECHANICAL DRAFTING
 2006

PITTSBOROUGH TOWNSHIP - SALEM COUNTY