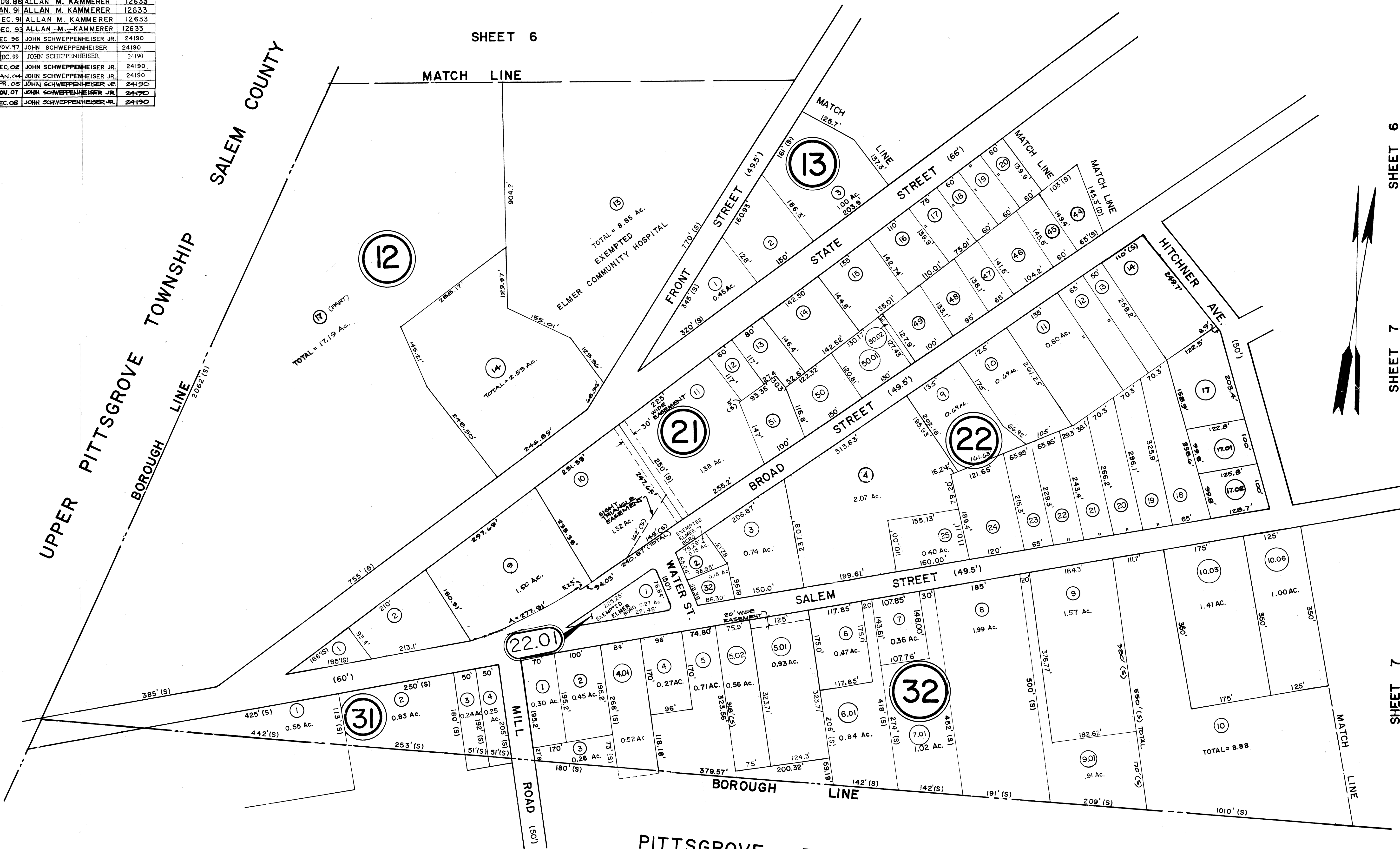


DATE	REVISED BY	LIC. No.
DEC. 87	ALLAN M. KAMMERER	12633
AUG. 88	ALLAN M. KAMMERER	12633
JAN. 91	ALLAN M. KAMMERER	12633
DEC. 91	ALLAN M. KAMMERER	12633
DEC. 93	ALLAN M. KAMMERER	12633
DEC. 96	JOHN SCHWEPPEHEISER JR.	24190
NOV. 17	JOHN SCHWEPPEHEISER	24190
DEC. 99	JOHN SCHWEPPEHEISER	24190
DEC. 02	JOHN SCHWEPPEHEISER JR.	24190
JAN. 04	JOHN SCHWEPPEHEISER JR.	24190
APR. 05	JOHN SCHWEPPEHEISER JR.	24190
NOV. 07	JOHN SCHWEPPEHEISER JR.	24190
DEC. 08	JOHN SCHWEPPEHEISER JR.	24190

NOTE:
BLOCK 22, LOT 1 UNASSIGNED

SHEET 6

UPPER PITTSBOROUGH TOWNSHIP
BOROUGH LINE
SALEM COUNTY



SHEET 6

SHEET 7

SHEET 7

PITTSBOROUGH TOWNSHIP
SALEM COUNTY

NEW JERSEY DEPARTMENT OF THE TREASURY
DIVISION OF TAXATION
PUBLIC UTILITY TAX BUREAU
APPROVED AS A TAX MAP PURSUANT TO THE
PROVISIONS OF CHAPTER 125, L.A. - OF TITLE 54,
FOR THE DIRECTOR, DIVISION OF TAXATION.
J. H. [Signature] E. AL. S.
LIC. 125-27
DATE: 11/1/76 SERIAL NO. 511

STANDARD MECHANICAL DRAFTING 2005

TAX MAP
BOROUGH OF ELMER
SALEM COUNTY, NEW JERSEY
SCALE: 1" = 100'
MARCH 1972
REV. NOV. 1976
REV. DEC. '980

NOTE:
LOTS 3, 4, 5, 6, 7 & 8 - BLOCK 21 HAVE BEEN COMBINED
WITH LOT 9, BLOCK 21.