



BOROUGH OF ELMER 2020 TRASH & RECYCLING CALENDAR



RESIDENTIAL, BUSINESS, INSTITUTIONAL
RECYCLING DAYS ARE CIRCLED • EVERY OTHER THURSDAY
TRASH COLLECTION EVERY WEDNESDAY

The state **requires** that municipalities recycle at least 60% of their trash stream. Your cooperation in separating **all** recyclables for pickup on recycling days is required for Elmer to meet this goal.
YOUR COOPERATION WILL HELP AVOID A PER-BAG-FEE FOR TRASH.

ITEMS WILL BE PICKED UP AT YOUR CURB AS FOLLOWS:

TRASH, GARBAGE, BULKY NON-RECYCLABLES

EVERY WEDNESDAY; pickup may be early morning so put containers out night before but no more than 24 hours prior; includes **BULKY ITEMS** like furniture, carpets, mattresses; *NO metal/white goods.*

COMMINGLED RECYCLABLES

EVERY OTHER THURSDAY place into RECYCLING CONTAINERS; *DO NOT USE plastic bags for recyclables; see insert for detailed zero-sort recycling guide.*

PAPER & CARDBOARD Newspaper, magazines, catalogs, junk mail, computer paper, cereal box-type cardboard and corrugated cardboard; *NO pizza, food contaminated or wax coated cardboard. No shredded paper, place it in trash.*

GLASS Rinse and remove metal rings; *No blue or plate glass.*

TIN CANS (BI-METAL) & ALUMINUM CANS Rinse cans; *No pet food or other aluminum cans with Teflon-like coatings.*

PLASTIC CONTAINERS that have a #1 and #2 only. Margarine, yogurt and plastic take-out containers are *NO LONGER* recyclable. **Plastic lids must be removed and put in trash.** *NO plastic contaminated with petroleum products like oil, anti-freeze, or gasoline.*

WHITE GOODS/APPLIANCES

LAST FRIDAY OF EVERY MONTH for washers, dryers, stoves, refrigerators, steel doors, metal pipes.

VEGETATIVE MATERIAL

CHRISTMAS TREES JANUARY 7 & 14; NO metal, tinsel, lights

BRUSH/BRANCHES APRIL 23 & OCTOBER 22 for curbside chipping; place sticks & branches with diameter less than 5 inches with thickest end to curb; *NO roots with dirt.* Anything larger should be tied and bundled in 3 foot lengths and placed with regular trash. Yard waste may be placed curbside on trash days but **MUST** be separated from regular trash.

LEAVES ONE COLLECTION will be scheduled; the date will be posted in the Elmer Times in November; leaves must be in trash cans or biodegradable bags; *NO LEAVES permitted in regular trash.*

ELECTRONICS - NO CURBSIDE PICKUP

All consumer electronics and small household appliances such as computers, TVs, laptops, monitors, DVD players, toasters (anything with a cord) should be taken for recycling to the Salem County Waste facility on 36 McKillip Rd. in Alloway on Wednesdays or Saturdays 8:00am to 3:00pm; (856) 935-7900.

DO NOT PLACE ANY PLASTIC BAGS IN YOUR RECYCLING. Use your blue recycling container or paper bags for your items.

Download the Recycle Coach App for additional recycling information. Free recycling containers may be picked up at the Borough Hall or by contacting Recycling Coordinator Cyndi Nolan (856) 305-0345.

LOOK FOR ANY CHANGES THAT MIGHT OCCUR DURING THE YEAR ON THE FRONT PAGE OF THE ELMER TIMES.

△ = Alternate Recycling Pickup ○ = Normal Recycling Pickup Days □ = White Goods + Metal Pickup Days ■ = Alternate White Goods
 ◇ = Branch Pickup ★ = Christmas Tree Pickup Days ◻ = Alternate Trash Pickup ○ = Holiday Could Effect Trash/Recycling Collection

January	February	March	April	May	June
S M T W T F S	S M T W T F S	S M T W T F S	S M T W T F S	S M T W T F S	S M T W T F S
5 6 7 8 9 10 11	2 3 4 5 6 7 8	1 2 3 4 5 6 7	1 2 3 4	1 2	1 2 3 4 5 6
12 13 14 15 16 17 18	9 10 11 12 13 14 15	8 9 10 11 12 13 14	5 6 7 8 9 10 11	3 4 5 6 7 8 9	7 8 9 10 11 12 13
19 20 21 22 23 24 25	16 17 18 19 20 21 22	15 16 17 18 19 20 21	12 13 14 15 16 17 18	10 11 12 13 14 15 16	14 15 16 17 18 19 20
26 27 28 29 30 31	23 24 25 26 27 28 29	22 23 24 25 26 27 28	19 20 21 22 23 24 25	17 18 19 20 21 22 23	21 22 23 24 25 26 27
		29 30 31	26 27 28 29 30	24 25 26 27 28 29 30 31	28 29 30
July	August	September	October	November	December
S M T W T F S	S M T W T F S	S M T W T F S	S M T W T F S	S M T W T F S	S M T W T F S
5 6 7 8 9 10 11	2 3 4 5 6 7 8	1 2 3 4 5	1 2 3	1 2 3 4 5 6 7	1 2 3 4 5
12 13 14 15 16 17 18	9 10 11 12 13 14 15	6 7 8 9 10 11 12	4 5 6 7 8 9 10	8 9 10 11 12 13 14	6 7 8 9 10 11 12
19 20 21 22 23 24 25	16 17 18 19 20 21 22	13 14 15 16 17 18 19	11 12 13 14 15 16 17	15 16 17 18 19 20 21	13 14 15 16 17 18 19
26 27 28 29 30 31	23 24 25 26 27 28 29 30 31	20 21 22 23 24 25 26	18 19 20 21 22 23 24	22 23 24 25 26 27 28	20 21 22 23 24 25 26
		27 28 29 30	25 26 27 28 29 30 31	29 30	27 28 29 30 31

Trash and/or Recycling Complaints Call: Waste Management 1-800-633-9096

BOROUGH OF ELMER

120 S. Main Street
P.O. Box 882
Elmer, New Jersey 08318

IMPORTANT INFORMATION—PLEASE READ **TRASH & RECYCLING RULES FOR 2019**

Trash Day: EVERY WEDNESDAY (1st pickup Jan. 2 due to holiday)

Recycling Day: EVERY OTHER THURSDAY starting Jan. 9.

Holidays may move collection to the following day; changes and SPECIAL PICKUP DAYS (Leaves, Chipping, etc.) will be posted on the front page of the Elmer Times.

- SALEM COUNTY SOLID WASTE FACILITY sponsors 4 Household Hazardous Waste Days and 2 Shredding Events every year; call (856) 935-7900 or visit their website for more information.

RESTRICTIONS

- Plastic bags ARE NOT acceptable containers for recycling; **FREE large blue recycling containers are available at Borough Hall**; call (856) 305-0345 or (856) 358-4010 ext. 110 to arrange pickup.

ELECTRONICS WILL NOT BE PICKED UP CURBSIDE; residents must take all household electronics to the Salem County Solid Waste Facility for recycling, Wednesday & Saturdays, 8:00am - 3:00pm.

THE DEPT. OF ENVIRONMENTAL PROTECTION PROHIBITS LEAVES IN THE LANDFILL. The date of leaf collection will be posted in the Elmer Times in November. Yard waste may be placed curbside on trash days in a separate container from regular trash.

CONTACTS

Trash/Recycling Collection Company
Waste Management
107 Silvia St., Ewing, NJ 08628

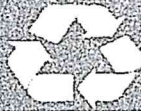
Pickup Complaints:
(800) 633-9096

Elmer Borough Hall
120 S. Main St., Elmer
(856) 358-4010
www.elmerboroughnj.com

Trash/Recycling Committee
Council Member Cyndi Nolan, Coordinator
(856) 305-0345
Council Committee Members
Cyndi Nolan, Lynda Davis, James Zee

Salem County Solid Waste Facility
36 McKillip Rd., Alloway, NJ 08001
Wednesdays & Saturdays, 8:00 am - 3:00pm
(856) 935-7900
<http://scianj.com/solid-waste/>

Clean Communities Coordinator
Barry Davis
(609) 420-0700



Recycle These Items



PAPER, CARDBOARD and JUNK MAIL TOO!

Includes: Newspaper, phone books, junk mail, magazines, catalogs, paperback books, brown grocery bags, gray paperboard (such as: cereal boxes & tissue boxes), school and office paper, **NO** shredded paper.



ALUMINUM, STEEL & TIN CANS

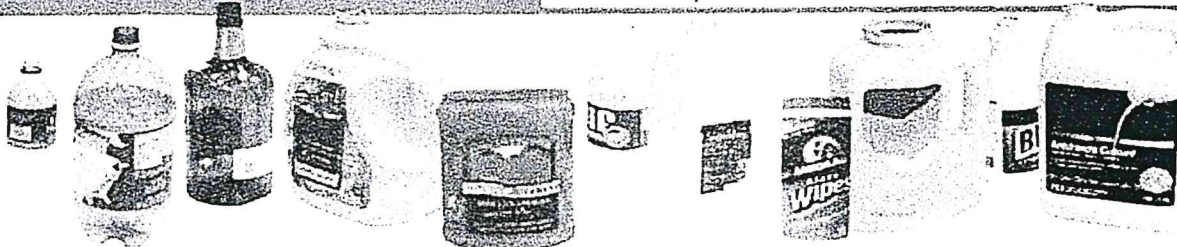
GLASS BOTTLES & JARS



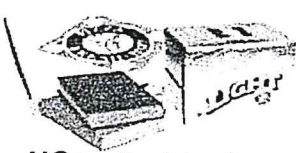
Empty non-hazardous aerosols

PLASTIC BOTTLES & JARS

Only Plastic bottles and jars with a number or on the bottom, **NO LIDS or CAPS.**



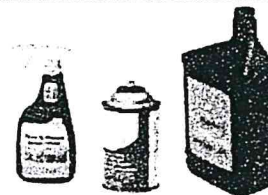
DO NOT RECYCLE



NO hardback books, foil-coated or food contaminated boxes.



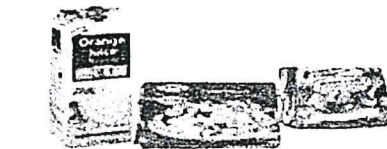
NO plastic pails, trays, tubs, food containers or foil items



NO motor oil, lubricants, paint and pesticide containers



NO mugs, glasses, vases, bulbs, bakeware, dishes, & window glass



NO refrigerated or frozen containers



NO plastic bags, styrofoam, lids or caps

HOW TO RECYCLE!

PAPER

No need to separate or place in brown bags. All recyclables can be co-mingled

PUT SHREDDED PAPER IN A BAG AND PLACE IT IN THE TRASH

CARDBOARD

Please flatten big boxes

JUNK MAIL

Window envelopes are OK
Remove product samples and plastic cards before recycling junk mail

NEVER PUT IN PLASTIC BAGS

BOTTLES & CANS

Rinse clean
Labels can stay on

Throw away caps & lids

Mix bottles & cans in your bucket

Electronics (computers, televisions, etc.) Fluorescent lamps/bulbs WILL NOT be collected at curbside and must be taken to the Salem County Improvement Authority on Wednesday or Saturday from 8 am to 3 pm.

Borough of Elmer

120 S. Main Street, P.O. Box 882
Elmer, New Jersey 08318

MAYOR

Joseph P. Stemberger (856) 358-2509

BOROUGH CLERK

Sarah D. Walker (856) 358-4010

CHIEF FINANCIAL OFFICER

Cynthia A. Strang (856) 521-0530

TELEPHONE 856-358-4010

FAX 856-358-8019

www.elmerboroughnj.com

BOROUGH COUNCIL

Lynda Davis (609) 420-4653

Cynthia L. Nolan (856) 305-0345

Bruce Foster (856) 777-3375

Steven A. Schalick (856) 498-6850

Lewis M. Schneider (856) 358-0388

James Zee III (609) 774-8628

December 2019

Dear Elmer Residents and Business Owners,

In accordance with our NJDEP Tier B Municipal Storm Water General Permit, the Borough has adopted various Ordinances to be in compliance with the Storm Water Program. As part of our Local Public Education Program, the purpose of this letter is to highlight the requirements and environmental benefits of these Ordinances. Listed below are some of the areas that are covered:

Pet Waste: This Ordinance requires pet owners to pick up and properly dispose of pet waste dropped on public or other people's property. It prevents fecal contamination from impacting waterways.

Litter: This Ordinance states that it is unlawful to throw, drop, discard or otherwise place litter of any nature upon any public or private property, other than in a litter receptacle. The purpose of the Ordinance is to prevent unsightly and unsanitary conditions and prevent litter from impacting waterways.

Improper Disposal of Waste: This Ordinance states that it is illegal to dispose of waste in any place not specifically designated for the purpose of solid waste storage or disposal. The purpose of the Ordinance is to prevent unsanitary conditions and groundwater pollution.


Wildlife Feeding: Feeding of water fowl in the Borough of Elmer is prohibited by Ordinance. The Borough enacted the Ordinance as a method to reduce water fowl population in response to health concerns regarding bacteria which is harmful to human and fish populations.

Yard Waste: Yard waste is regulated via Ordinances which establish the current zone collection system and the methods of collecting leaves, brush, and other yard waste. The purpose of the Ordinances is to keep leaves and grass out of the storm sewer system.

Illicit Connections: This Ordinance makes it unlawful to connect any pipe or device to the municipal storm sewer system that is intended to discard, spill or dump any material other than storm water runoff or groundwater (sump pumps) into the system. The purpose of this Ordinance is to prevent pollution and contamination of waterways which receive discharge from our storm sewers.

The transport of pollutants into local water bodies can result in the destruction of fish, wildlife and habitats; threats to public health; and the loss of recreational and aesthetic value. The above Ordinances have been adopted to protect our environment and to keep pollutants that are commonly conveyed by storm water from adversely impacting our waterways and groundwater supplies. Thank you for your continued cooperation with our environmental protection efforts.

Sincerely,



Joseph P. Stemberger, Mayor