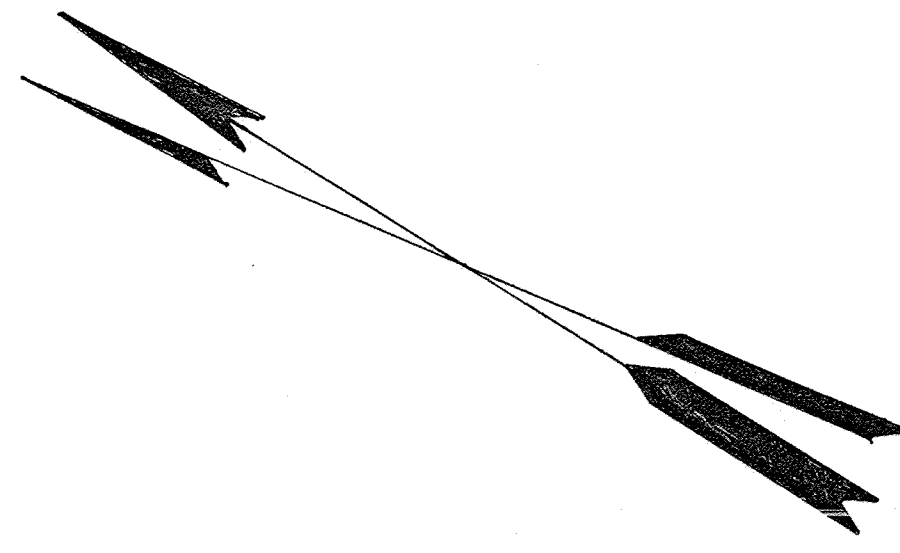
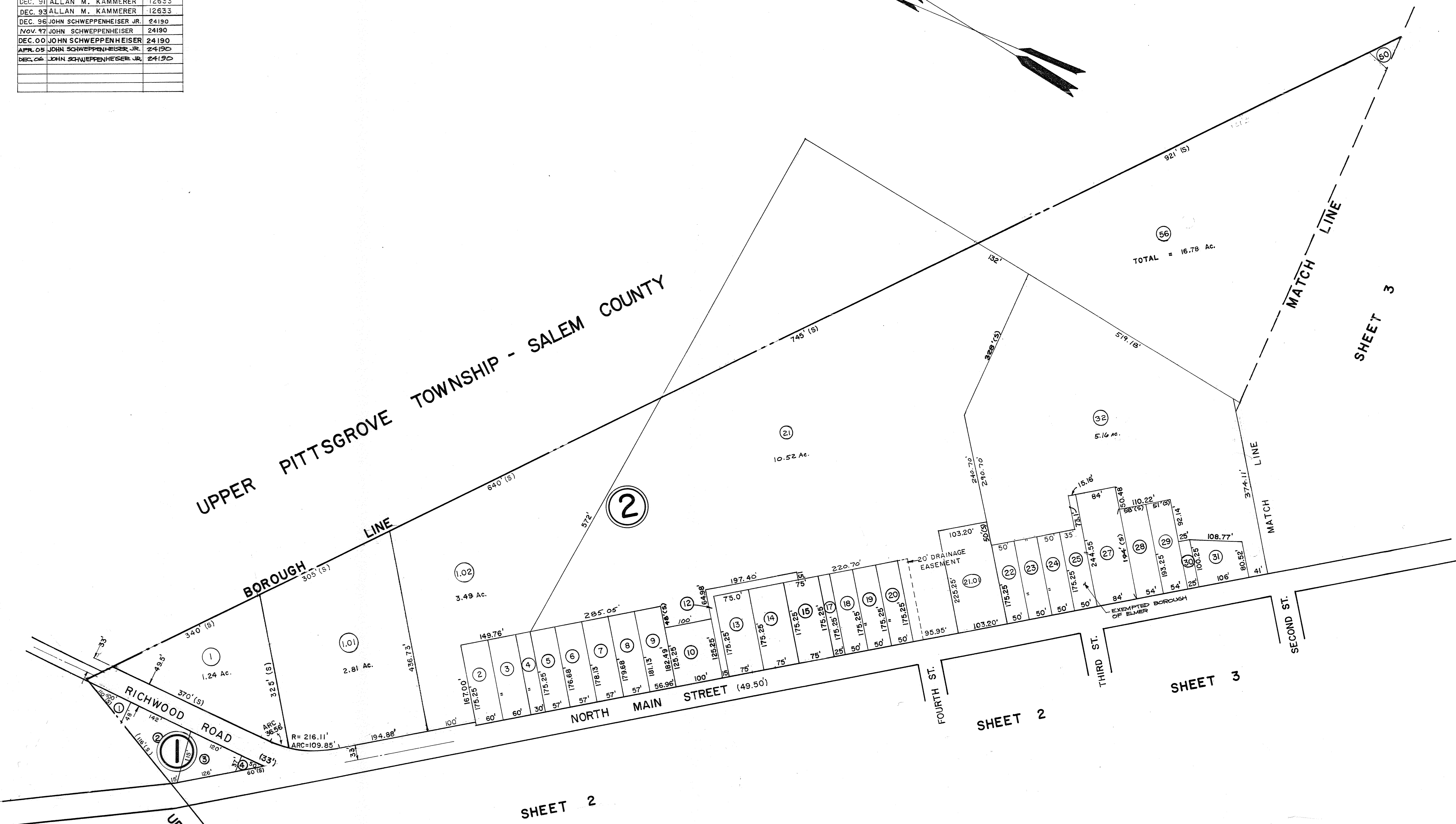


DATE	REVISED BY	LIC. No.
AUG. 88	ALLAN M. KAMMERER	12633
DEC. 91	ALLAN M. KAMMERER	12633
DEC. 93	ALLAN M. KAMMERER	12633
DEC. 96	JOHN SCHWEPPEHEISER JR.	24190
NOV. 97	JOHN SCHWEPPEHEISER	24190
DEC. 00	JOHN SCHWEPPEHEISER	24190
APR. 05	JOHN SCHWEPPEHEISER JR.	24190
DEC. 06	JOHN SCHWEPPEHEISER JR.	24190



UPPER PITTSBORO TOWNSHIP - SALEM COUNTY

UPPER PITTSBORO TOWNSHIP
SALEM COUNTY



SHEET 2

SHEET 2

SHEET 3

SHEET 3

NEW JERSEY DEPARTMENT OF THE TREASURY
DIVISION OF TAXATION
PUBLIC UTILITY TAX BUREAU
APPROVED AS A TAX MAP PURSUANT TO THE
PROVISIONS OF CHAPTER 175, LAWS OF 1914, ETC.
FOR THE DIRECTOR, DIVISION OF TAXATION.
J. H. [Signature] S.E.L.S.
LIC. # 55009 STATE SUPERVISOR
DATE: JAN 4 1972 SERIAL No. 515

STANDARD MECHANICAL DRAFTING 2006

TAX MAP
BOROUGH OF ELMER
SALEM COUNTY, NEW JERSEY
SCALE: 1" = 100'
MARCH 1972
REV. DEC. 1980