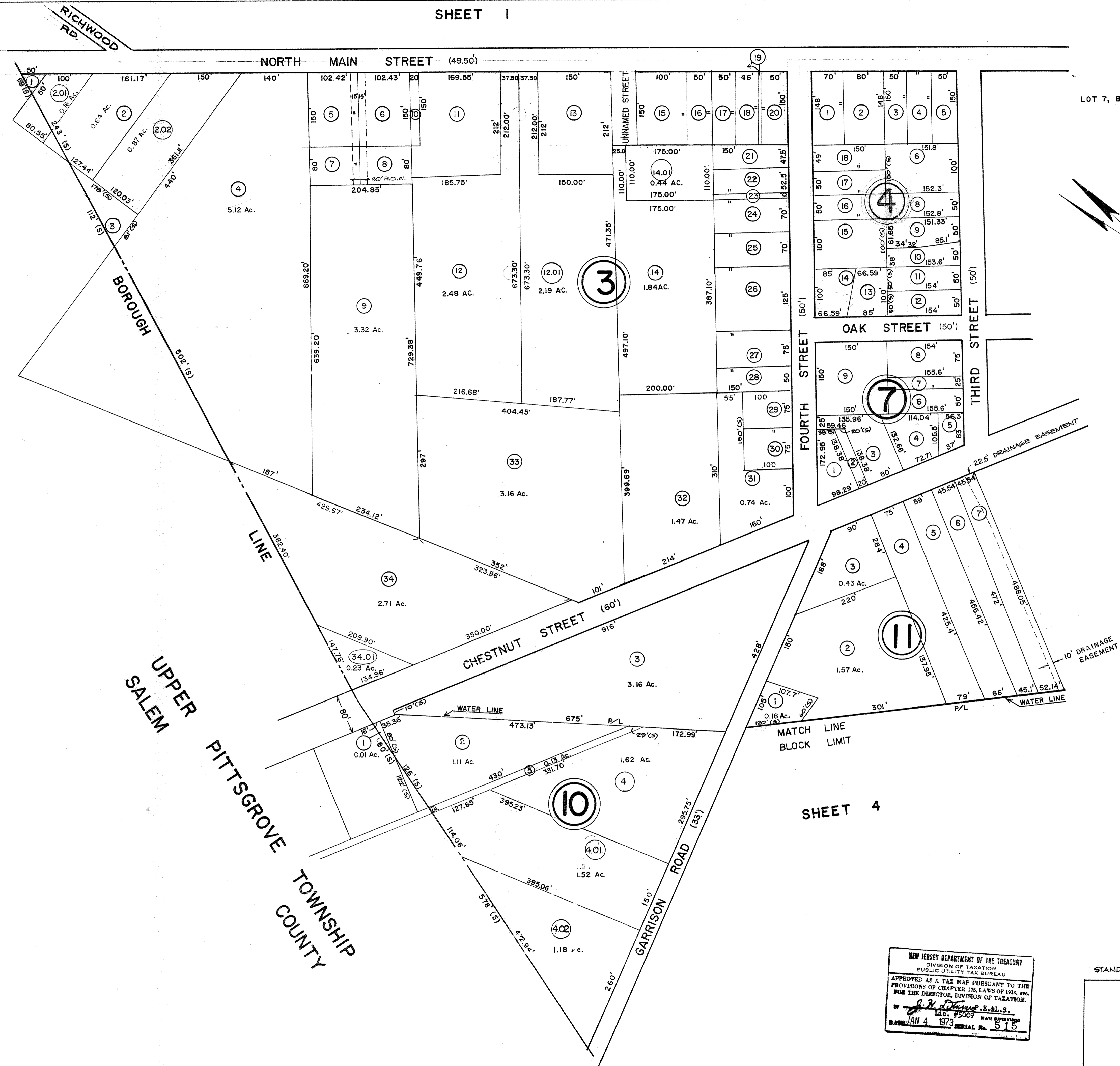


DATE	REVISED BY	LIC. No.
DEC. 87	ALLAN M. KAMMERER	12633
AUG. 88	ALLAN M. KAMMERER	12633
NOV. 92	ALLAN M. KAMMERER	12633
DEC. 94	JOHN SCHWEPPEHEISER	24190
DEC. 96	JOHN SCHWEPPEHEISER	24190
JAN. 04	JOHN SCHWEPPEHEISER JR.	24190
APR. 05	JOHN SCHWEPPEHEISER JR.	24190

SHEET 1



LOT 7, BLOCK 4 UNASSIGNED

SHEET 3

SHEET 4

UPPER SALEM
PITTSBORO TOWNSHIP
COUNTY

NEW JERSEY DEPARTMENT OF THE TREASURY
DIVISION OF TAXATION
PUBLIC UTILITY TAX BUREAU
APPROVED AS A TAX MAP PURSUANT TO THE
PROVISIONS OF CHAPTER 125, LAWS OF 1944, etc.
FOR THE DIRECTOR, DIVISION OF TAXATION.
BY *J. H. [Signature]* E.S.L.S.
LIC. #5009 STATE SURVEYOR
DATE: JAN 4 1973 SERIAL No. 915

STANDARD MECHANICAL DRAFTING 2005

TAX MAP
BOROUGH OF ELMER
SALEM COUNTY, NEW JERSEY
SCALE: 1" = 100'
MARCH 1972
REV. NOV. 1976
REV. DEC. 1980