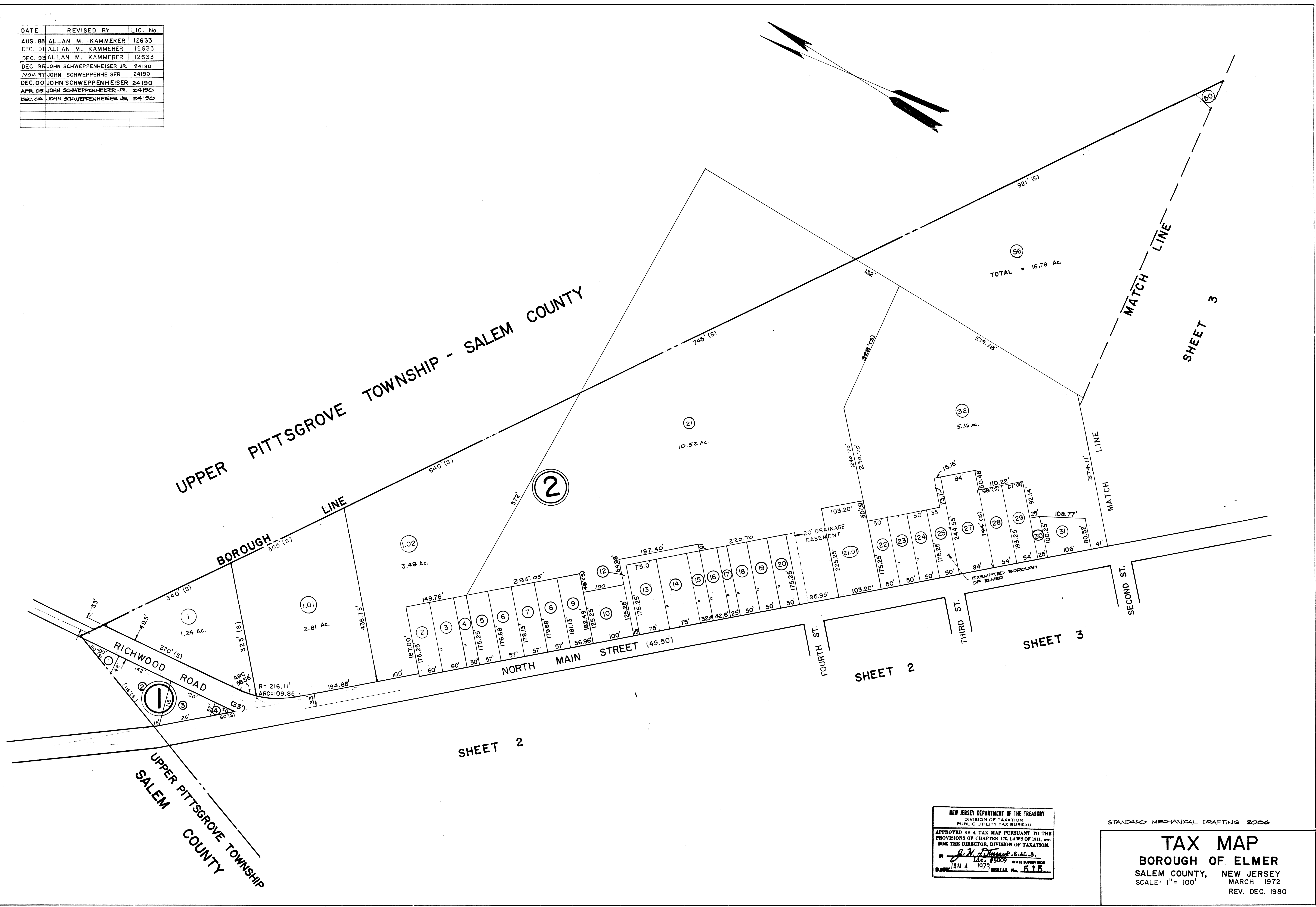
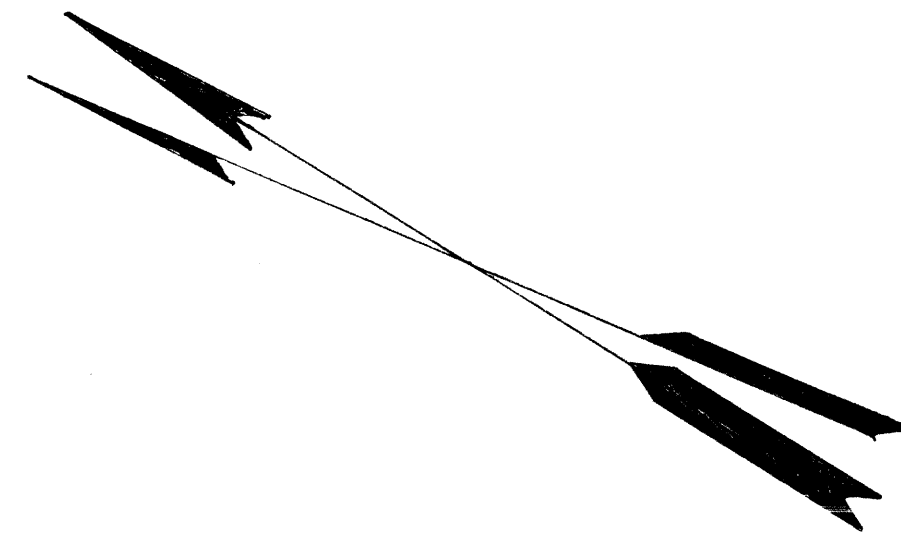


DATE	REVISED BY	LIC. No.
AUG. 88	ALLAN M. KAMMERER	12633
DEC. 91	ALLAN M. KAMMERER	12633
DEC. 93	ALLAN M. KAMMERER	12633
DEC. 96	JOHN SCHWEPPEHEISER JR.	24190
NOV. 97	JOHN SCHWEPPEHEISER	24190
DEC. 00	JOHN SCHWEPPEHEISER	24190
APR. 05	JOHN SCHWEPPEHEISER JR.	24190
DEC. 06	JOHN SCHWEPPEHEISER JR.	24190



NEW JERSEY DEPARTMENT OF THE TREASURY
 DIVISION OF TAXATION
 PUBLIC UTILITY TAX BUREAU
 APPROVED AS A TAX MAP PURSUANT TO THE
 PROVISIONS OF CHAPTER 172, LAWS OF 1911, ETC.
 FOR THE DIRECTOR, DIVISION OF TAXATION.
J. H. Thomas, S. & L. S.
 L.I.C. #5009 STATE SUPPLY HOUSE
 JAN 4 1972 SERIAL No. 516

STANDARD MECHANICAL DRAFTING 2006

TAX MAP
 BOROUGH OF ELMER
 SALEM COUNTY, NEW JERSEY
 SCALE: 1" = 100'
 MARCH 1972
 REV. DEC. 1980