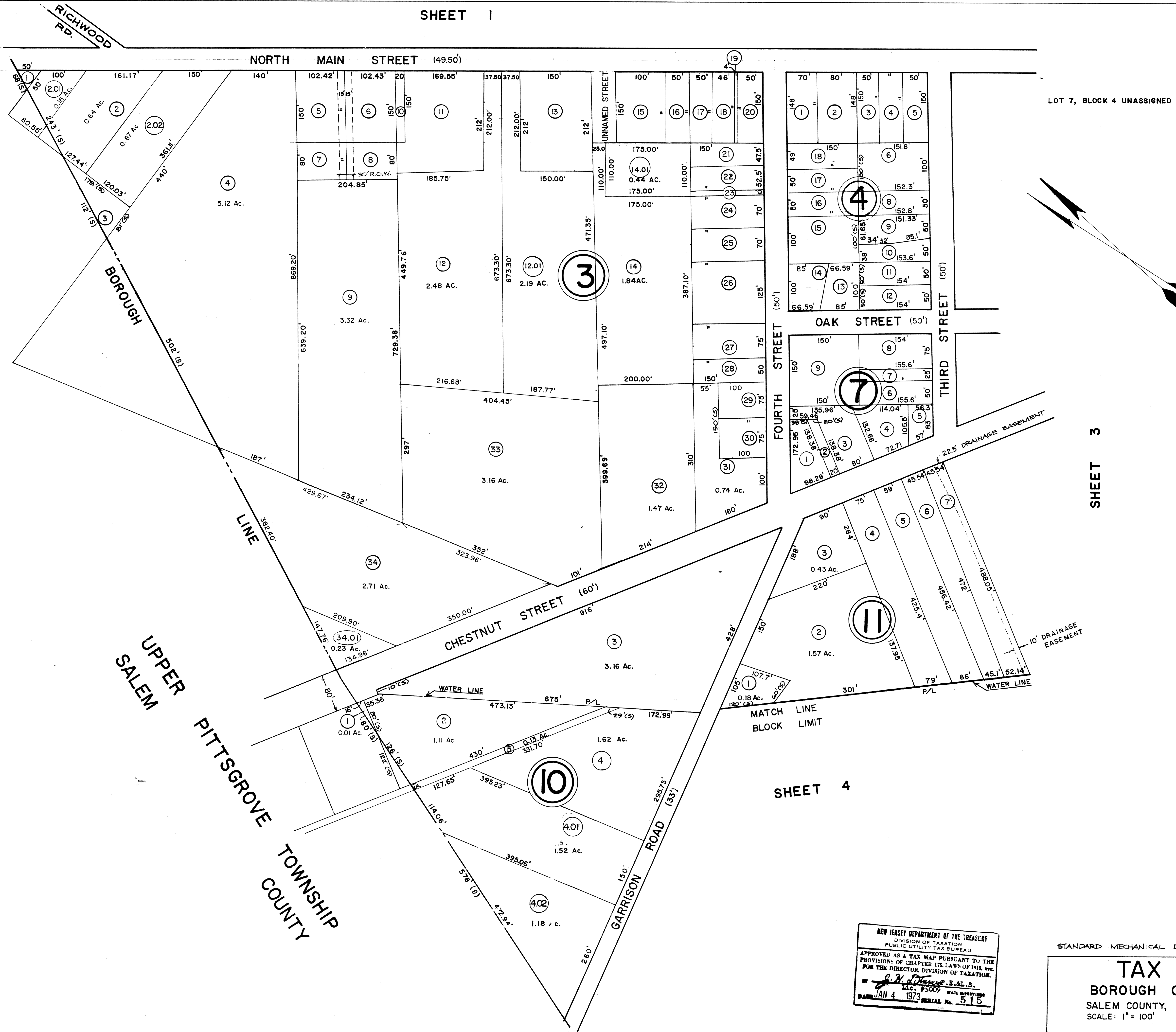


SHEET I

DATE	REVISED BY	LIC. No.
DEC. 87	ALLAN M. KAMMERER	12633
AUG. 88	ALLAN M. KAMMERER	12633
NOV. 92	ALLAN M. KAMMERER	12633
DEC. 94	JOHN SCHWEPPEHEISER	24190
DEC. 96	JOHN SCHWEPPEHEISER	24190
JAN. 04	JOHN SCHWEPPEHEISER JR.	24190
APR. 05	JOHN SCHWEPPEHEISER JR.	24190



SHEET 3

SHEET 4

NEW JERSEY DEPARTMENT OF THE TREASURY
 DIVISION OF TAXATION
 PUBLIC UTILITIES TAX BUREAU
 APPROVED AS A TAX MAP PURSUANT TO THE
 PROVISIONS OF CHAPTER 125, LAWS OF 1911, ETC.
 FOR THE DIRECTOR, DIVISION OF TAXATION.
 BY *[Signature]* F.L.S.
 LIC. #5009
 DATE JAN 4 1973 SERIAL No. 513

STANDARD MECHANICAL DRAFTING 2005
TAX MAP
 BOROUGH OF ELMER
 SALEM COUNTY, NEW JERSEY
 SCALE: 1" = 100'
 MARCH 1972
 REV. NOV. 1976
 REV. DEC. 1980