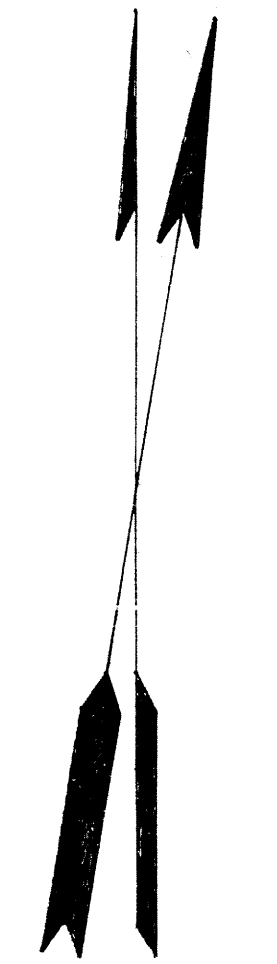


DATE	REVISED BY	LIC. No.
AUG. 88	ALLAN M. KAMMERER	12633
JAN. 91	ALLAN M. KAMMERER	12633
NOV. 92	ALLAN M. KAMMERER	12633
DEC. 94	JOHN SCHWEPPEHEISER	24190
DEC. 00	JOHN SCHWEPPEHEISER	24190
JAN. 04	JOHN SCHWEPPEHEISER JR.	24190
APR. 05	JOHN SCHWEPPEHEISER JR.	24190
DEC. 06	JOHN SCHWEPPEHEISER JR.	24190
JULY 07	JOHN SCHWEPPEHEISER JR.	24190

BLOCK 16, LOT 12 UNASSIGNED

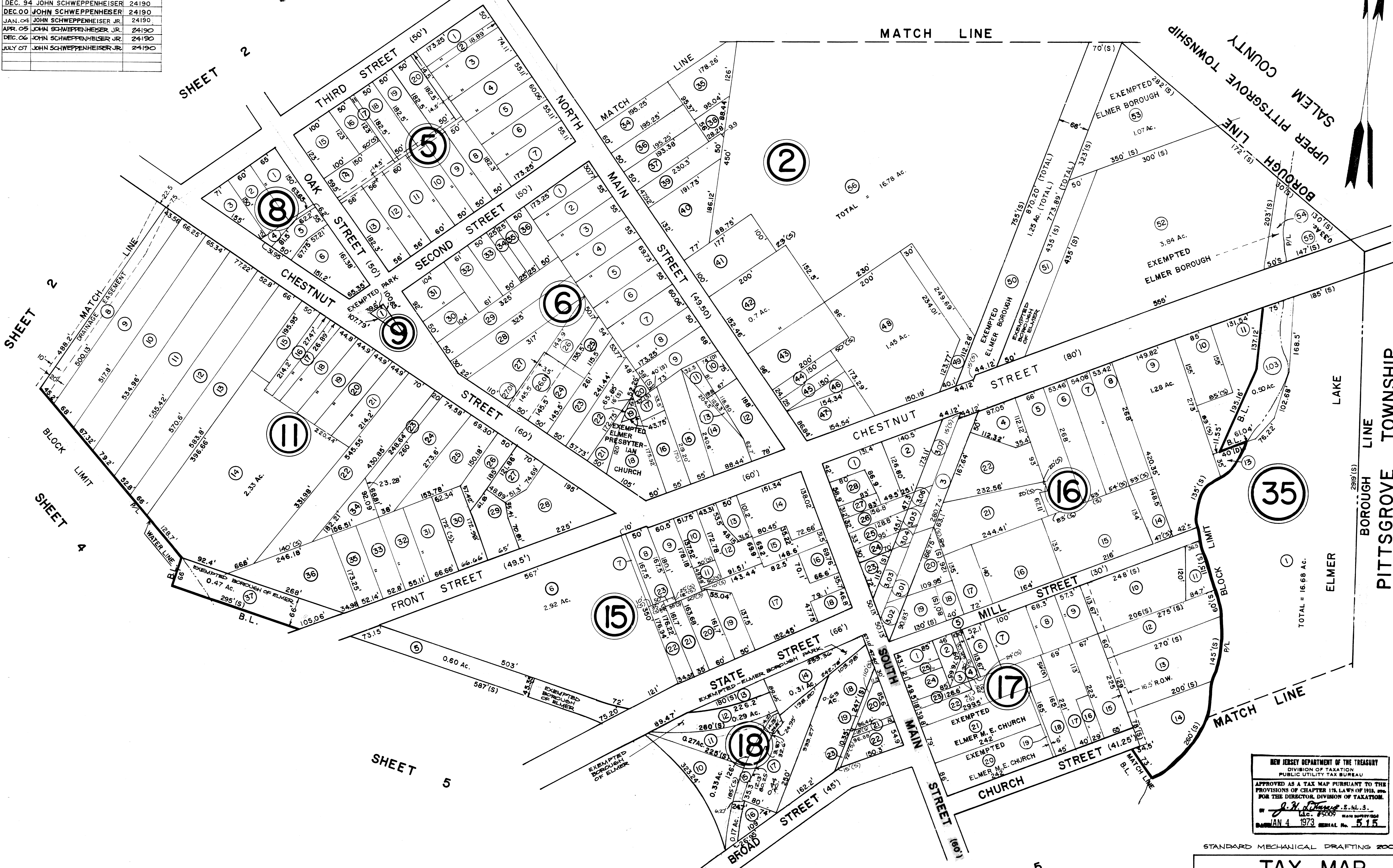
SHEET 1



SHEET 2

SHEET 4

SHEET 5



NEW JERSEY DEPARTMENT OF THE TREASURY  
 DIVISION OF TAXATION  
 PUBLIC UTILITY TAX BUREAU  
 APPROVED AS A TAX MAP PURSUANT TO THE  
 PROVISIONS OF CHAPTER 173, LAWS OF 1974, AND  
 FOR THE DIRECTOR, DIVISION OF TAXATION.  
*J. H. [Signature]* S.W.S.  
 LIC. 15008  
 JAN 4 1973 SERIAL No. 515

STANDARD MECHANICAL DRAFTING 2006

**TAX MAP**  
 BOROUGH OF ELMER  
 SALEM COUNTY, NEW JERSEY  
 SCALE: 1" = 100'  
 MARCH 1972  
 REV. NOV. 1976  
 REV. DEC. 1980