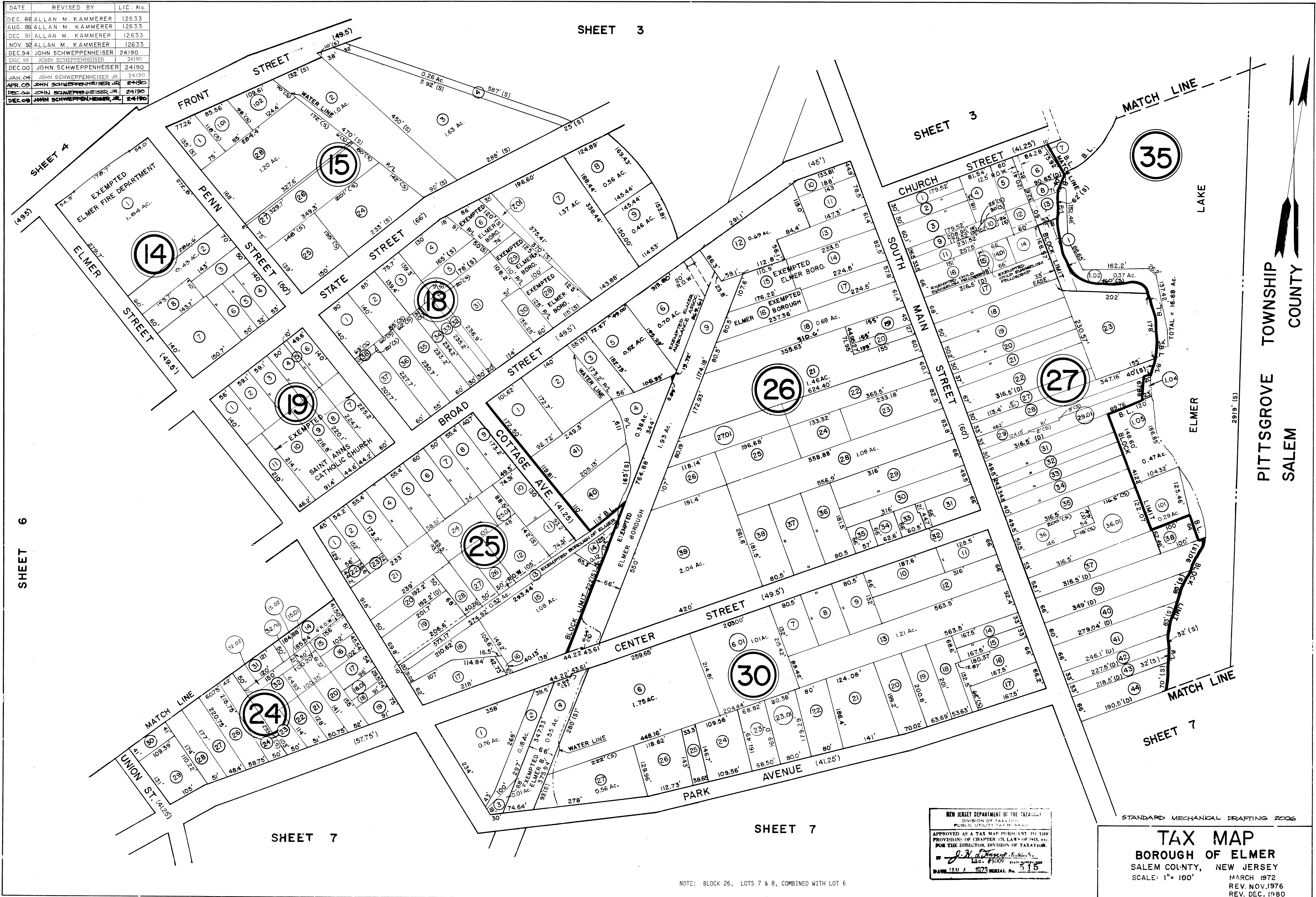


DATE	REVISED BY	LIC. No.
DEC. 86	ALLAN M. KAMMERER	12633
AUG. 88	ALLAN M. KAMMERER	12633
DEC. 91	ALLAN M. KAMMERER	12633
NOV. 92	ALLAN M. KAMMERER	12633
DEC. 94	JOHN SCHWEPPEHEISER	24190
DEC. 99	JOHN SCHWEPPEHEISER	24190
DEC. 00	JOHN SCHWEPPEHEISER	24190
JAN. 04	JOHN SCHWEPPEHEISER JR.	24190
APR. 05	JOHN SCHWEPPEHEISER JR.	24190
DEC. 06	JOHN SCHWEPPEHEISER JR.	24190
DEC. 09	JOHN SCHWEPPEHEISER, JR.	24190

SHEET 3



SHEET 6

SHEET 7

SHEET 7

NOTE: BLOCK 26, LOTS 7 & 8, COMBINED WITH LOT 6

NEW JERSEY DEPARTMENT OF THE TREASURY
 DIVISION OF TAXATION
 PUBLIC UTILITY TAX BUREAU
 APPROVED AS A TAX MAP PURSUANT TO THE
 PROVISIONS OF CHAPTER 125, LAWS OF 1914, ETC.
 FOR THE DIRECTOR, DIVISION OF TAXATION.
J. A. [Signature]
 LIC. #5009
 DATE: JAN 4 1972 SERIAL No. 515

STANDARD MECHANICAL DRAFTING 2006

TAX MAP
BOROUGH OF ELMER
 SALEM COUNTY, NEW JERSEY
 SCALE: 1" = 100'
 MARCH 1972
 REV. NOV. 1976
 REV. DEC. 1980

PITTSBORO TOWNSHIP
 SALEM COUNTY

