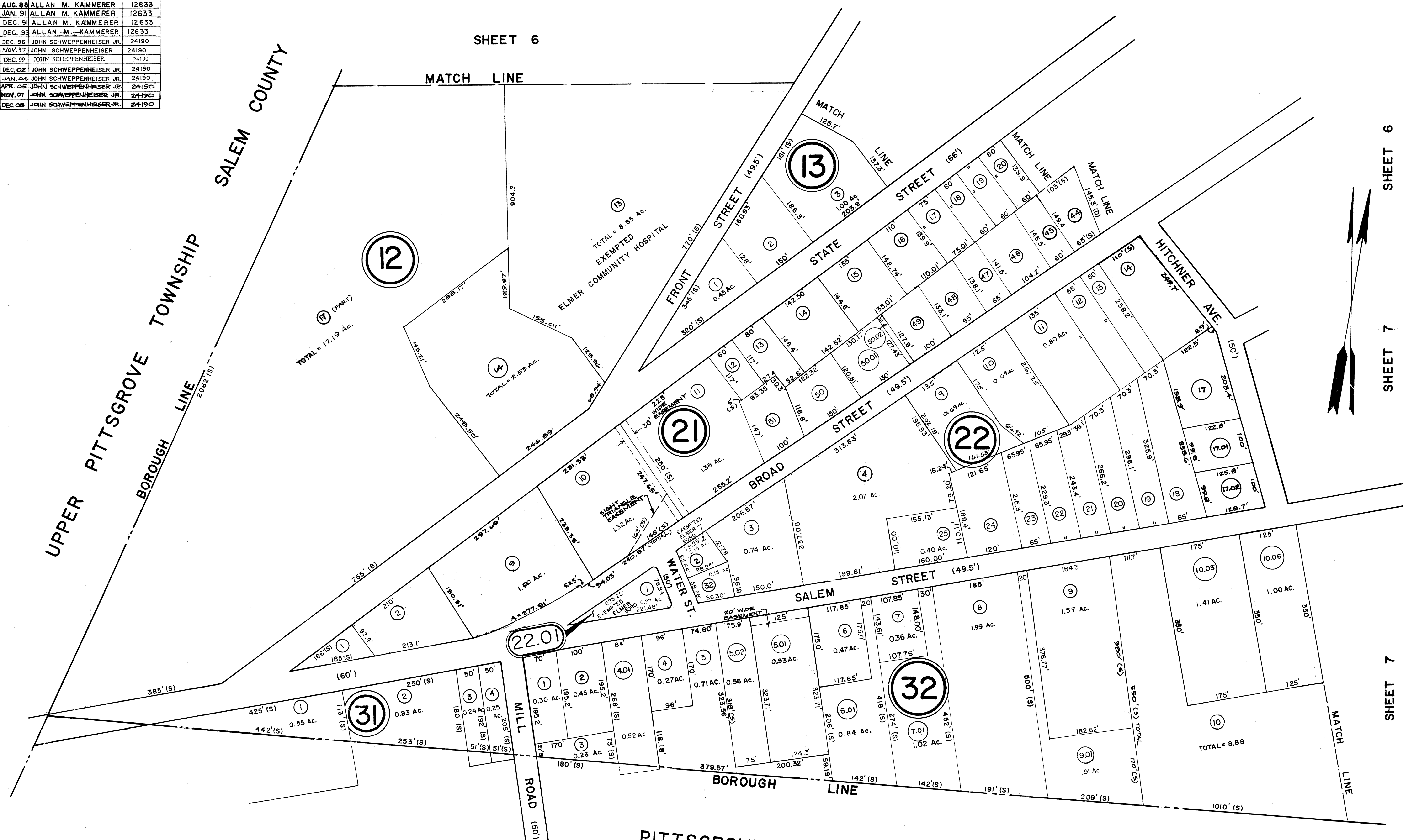


DATE	REVISED BY	LIC. No.
DEC. 87	ALLAN M. KAMMERER	12633
AUG. 88	ALLAN M. KAMMERER	12633
JAN. 91	ALLAN M. KAMMERER	12633
DEC. 91	ALLAN M. KAMMERER	12633
DEC. 93	ALLAN M. KAMMERER	12633
DEC. 96	JOHN SCHWEPPEHEISER JR.	24190
NOV. 17	JOHN SCHWEPPEHEISER	24190
DEC. 99	JOHN SCHWEPPEHEISER	24190
DEC. 02	JOHN SCHWEPPEHEISER JR.	24190
JAN. 04	JOHN SCHWEPPEHEISER JR.	24190
APR. 05	JOHN SCHWEPPEHEISER JR.	24190
NOV. 07	JOHN SCHWEPPEHEISER JR.	24190
DEC. 08	JOHN SCHWEPPEHEISER JR.	24190

NOTE:  
BLOCK 22, LOT 1 UNASSIGNED

SHEET 6



SALEM COUNTY  
UPPER PITTSBOROUGH TOWNSHIP  
BOROUGH LINE  
MILL ROAD (50')

PITTSBOROUGH TOWNSHIP  
SALEM COUNTY

SHEET 6  
SHEET 7  
SHEET 7

NEW JERSEY DEPARTMENT OF THE TREASURY  
DIVISION OF TAXATION  
PUBLIC UTILITY TAX BUREAU  
APPROVED AS A TAX MAP PURSUANT TO THE  
PROVISIONS OF CHAPTER 125, L.A. - OF TITLE 54C,  
FOR THE DIRECTOR, DIVISION OF TAXATION.  
*J. H. [Signature]* E. AL. S.  
LIC. 125.27  
DATE: 11/1/76 SERIAL NO. 511

STANDARD MECHANICAL DRAFTING 2005  
**TAX MAP**  
BOROUGH OF ELMER  
SALEM COUNTY, NEW JERSEY  
SCALE: 1" = 100'  
MARCH 1972  
REV. NOV. 1976  
REV. DEC. '980

NOTE:  
LOTS 3, 4, 5, 6, 7 & 8 - BLOCK 21 HAVE BEEN COMBINED  
WITH LOT 9, BLOCK 21.